



SCAN FOR WEBSITE

INTRUSION DETECTION SYSTEM



ENSURING THE SAFETY OF
THE **TRACK, WILDLIFE, & PASSENGERS**

CERTIFICATION BY



FOLLOW US ON!



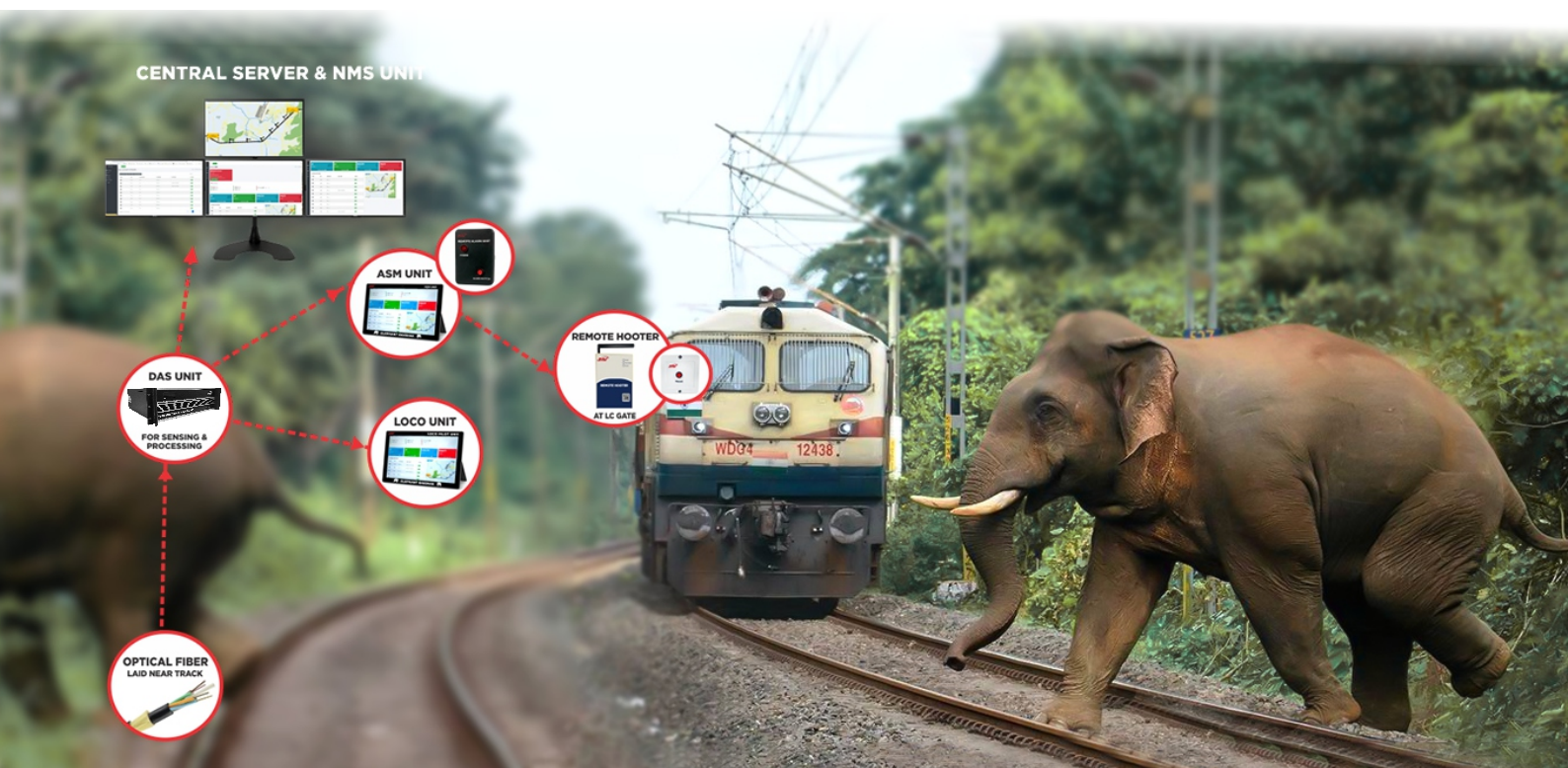
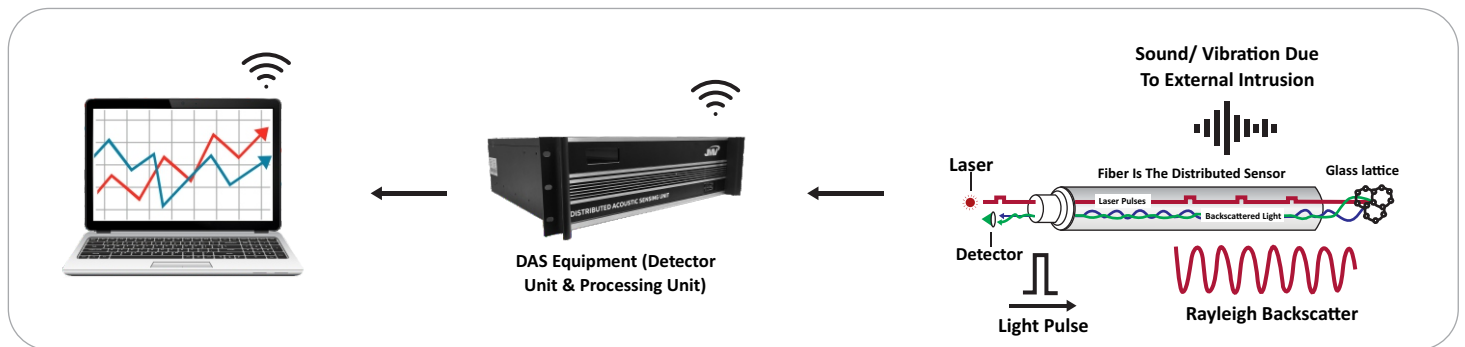
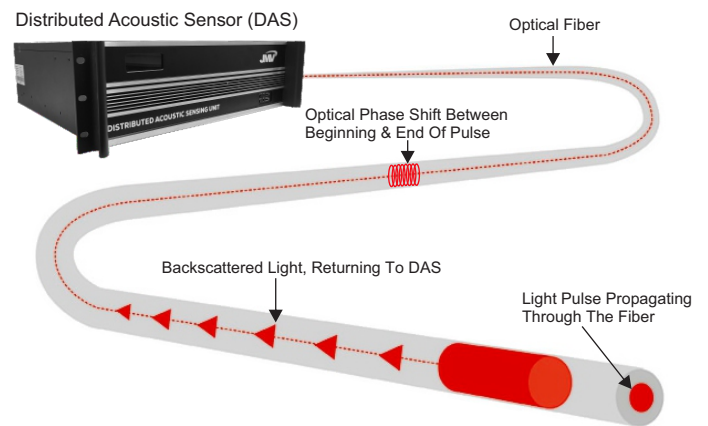
JMV LPS LIMITED

Intrusion Detection System

Elephant Rakshak (ER) employs cutting-edge fibre optic technology known as Distributed Acoustic Sensing (DAS) to enhance elephant safety. It detects acoustic signals along a fibre optic cable, enabling early detection of elephants in the elephant corridors and other events like train detection, digging activities, fibre cuts/losses etc. to enhance the overall railway safety and to protect elephants.

Technology

- The Laser pulses are periodically sent down an optic fibre cable, looking for Backscatter to perform temperature sensing and Rayleigh backscatter for pressure/acoustic sensing.
- The signature of the backscatter changes with change in temperature/acoustic energy.
- The entire length of the fibre optic cable acts like a sensor and every meter act like an independent thermometer/microphone.



System Components:



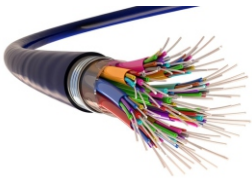
DAS Unit



Reset Unit



ER Software



Fiber optic cable



ER Loco Pilot Unit (Tablet)



Power Backup



ASM Unit



Remote Alarm Unit



IP Based Hooter

Key Features & Solution Range

The Elephant Rakshak features an advanced user friendly, single software platform to show real time:

- Elephant Movement Detection
- Train Detection events
- Detects digging activity on track
- Fiber Cuts/Losses.





JMV LPS Ltd.
W50, Sector 11, Noida 201301, India



www.jmv.co.in



+91-0120-4590000



contact@jmv.co.in

FOLLOW US ON!

