



SCAN FOR WEBSITE



# DYNAMIC **BIRD** DIVERTER

REDUCE THE RISK OF COLLISION OF BIRDS WITH POWERLINE



CERTIFICATION BY



FOLLOW US ON!



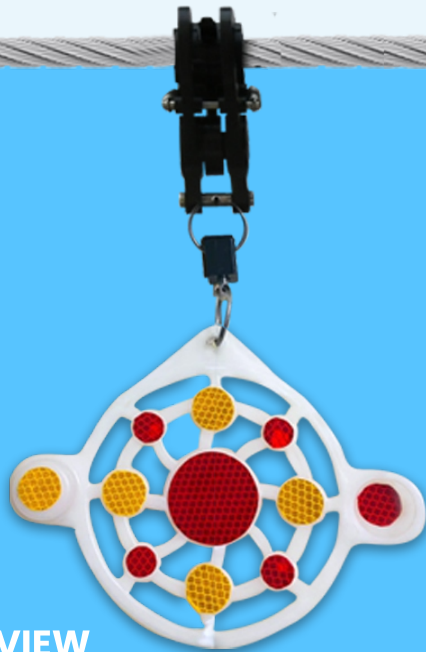
**JMV LPS LIMITED**

## DYNAMIC BIRD DIVERTER

Dynamic Bird diverter devices were developed to improve power line visibility for birds and reduce their risk of collision. Dynamic bird diverter, identified as one of the measures to avoid the chances of collision of birds with transmission lines, and shall be placed in identified stretches as per the guidelines by Govt of India.

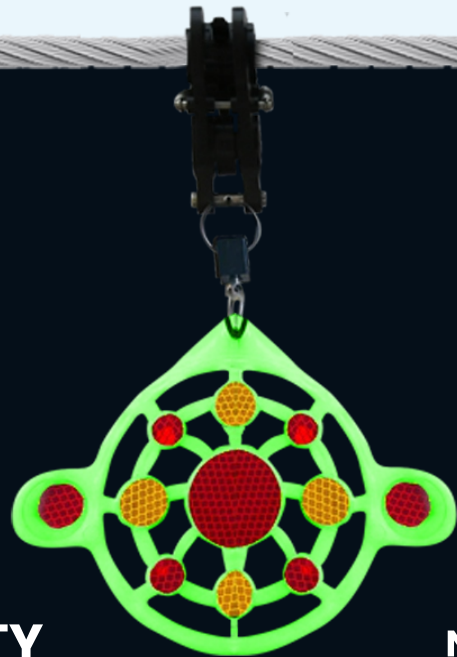
### FEATURES

- ➡ Glows in Dark
- ➡ Extra Large Warning Disk
- ➡ Aerodynamically Stable
- ➡ Bearing Assisted Rotation for Long Life & Seamless Performance
- ➡ Ultra Bright Reflective Warning Disk



DAY VIEW

VISIBILITY



NIGHT VIEW

**WAY TO ENHANCE POWER TRANSMISSION AND DISTRIBUTION COMPANIES CAN IMPROVE THE RELIABILITY WITHOUT BEING THREAT TO AVIAN SPECIES ELECTRIC NETWORK –**

*When we talk about the bird diverters, focus of this installation is –*

-  Ensuring uninterrupted and fault-free electric supply.
-  Reducing bird mortality rate.



# WHY DO WE NEED **DYNAMIC BIRD DIVERTER** ON TRANSMISSION LINES?

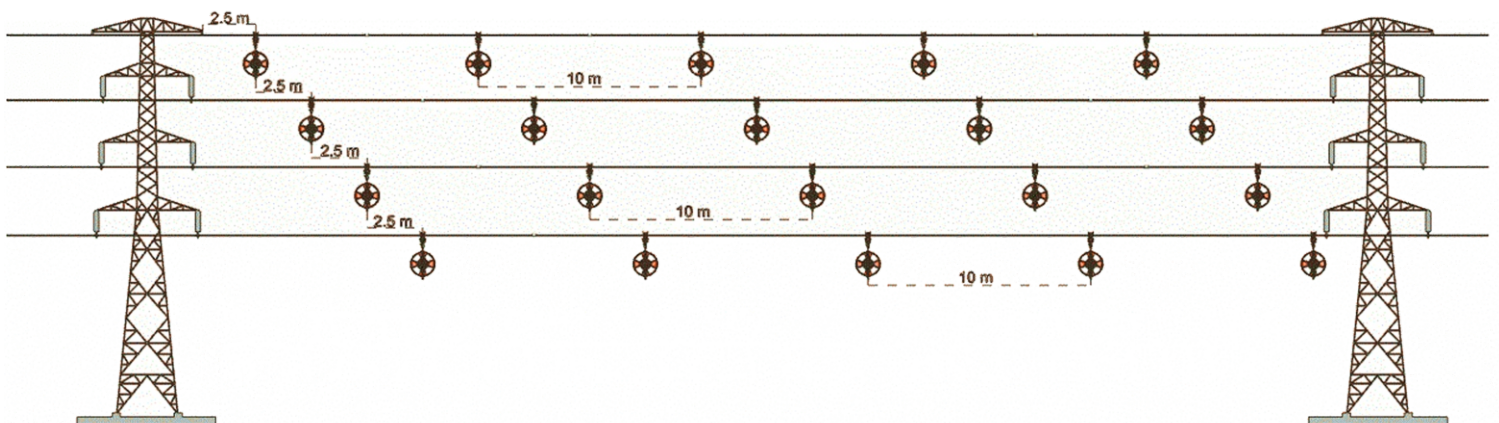
For safety reasons, high powered transmission lines are positioned at significant height very high; however, for avian species, these overhead conductors are potentially fatal obstacle.

Under low visibility conditions, birds sometimes fly into the power lines and collide with overhead structures and conductors. Besides being fatal for birds, such accidents damage insulators and equipment causing unnecessary inconvenience to the customer.



## **SPACING HORIZONTAL LINE LAYOUT**

For optimal results, spacing distances are generally recommended at **10-meter intervals**, depending upon local conditions. Since wind resistance is very limited, sufficient number of dynamic bird diverter can be used to ensure adequate visibility without creating stresses on the line. When marking adjacent spans, overall visibility is improved by staggering placement between the spans.



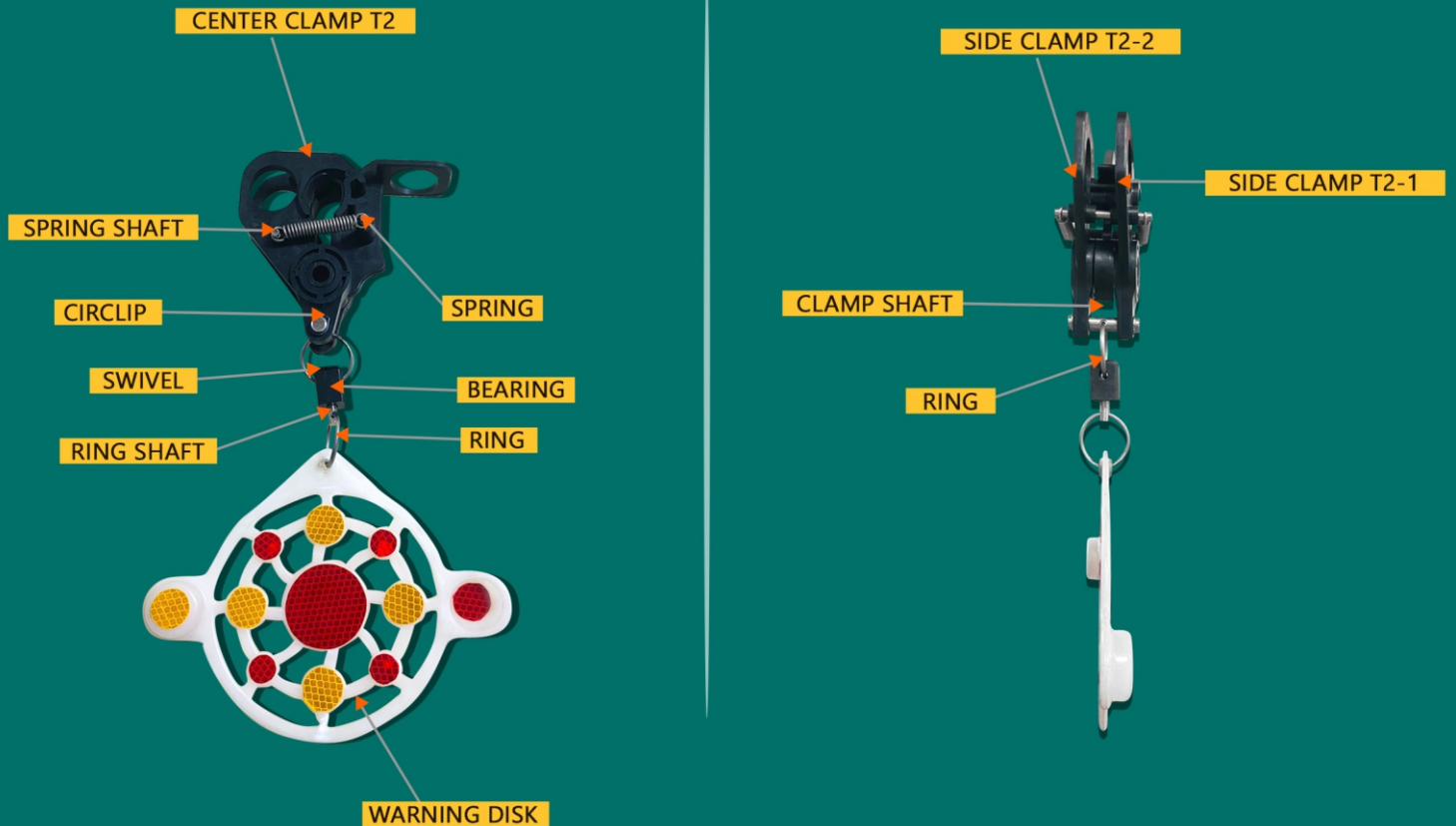
Generally, the bird diverters are marked on the ground or earth wire as they are electrically lifeless which keeps it away from the high voltage complexities.



## DYNAMIC BIRD DIVERTERS/FLAPPER

To overcome the drawback of fixed diverters, we have uniquely designed dynamic bird diverters. Dynamic bird diverters are a warning disk with clamping technology which can give the level best result when it comes to averting birds from power lines.

### DETAILS BIRD DIVERTER



### WHAT EXACTLY MAKES DYNAMIC BIRD DIVERTERS PEERLESS?

- ✓ Well-built and strongly clamped onto powerlines
- ✓ Diuturnal and efficacious mechanism that require no maintenance
- ✓ Tested to have sturdy grip which does not shatter even in the extreme wind speed of 150km/hr-170km/hr.
- ✓ Have non corroding and long-lasting parts
- ✓ Moving parts enhances the visibility factor

Talk to our technical team to learn more on such innovative products in market further to say goodbye to all electric power losses and associated damage concerns. Note that your minor ignorance can sooner become the biggest threat to avian population.